



New Products 2022

New Products

2022



JB Products
an FPC International, Inc. company
6851 Enterprise Drive
South Bend, IN 46628
574.288.0607

Table of Contents

Cleanout Cover Plates -----	2
Organizational Trays & Tote Tray Line -----	3
Nipple Caddies -----	5
Utility Tub Boxes -----	6
Tub Protectors -----	7
Shower Base Protectors -----	8
Washer Machine Pans -----	9
Water Heater Pans -----	10
Access Panels & Covers -----	12
HVAC Condensate Drain Pans -----	13
Foam & Wrap -----	14

Cleanout Cover Plates

- Available in chrome/matte (prevents unsightly scratches and marks) or pure white/matte (paintable) finishes
- Made of durable, high-impact plastic (resistant to rust and corrosion)
- Includes #14 screw for easy installation into plastic plug
- Each cover plate is individually bagged
- High quality and inexpensive
- Made in the USA



Cleanout Cover Plates - Flat

Part Number	Description	Finish
JBSB104FC	4 1/4 FLAT	Chrome
JBSB104FW	4 1/4 FLAT	White
JBSB105FC	5 1/4 FLAT	Chrome
JBSB105FW	5 1/4 FLAT	White
JBSB107FC	7 1/4 FLAT	Chrome
JBSB107FW	7 1/4 FLAT	White
JBSB109FC	9 1/4 FLAT	Chrome
JBSB109FW	9 1/4 FLAT	White

Cleanout Cover Plates - Bell

Part Number	Description	Finish
JBSB105BC	5 1/4 BELL	Chrome
JBSB105BW	5 1/4 BELL	White
JBSB107BC	7 1/4 BELL	Chrome
JBSB107BW	7 1/4 BELL	White
JBSB109BC	9 1/4 BELL	Chrome
JBSB109BW	9 1/4 BELL	White



- These trays are tough - made for tradespeople
- Made of no stick material
- JBSBT1000 can be divided into compartments as small as 4 ½" x 1 ½" (includes 6 dividers)
- JBSBT1025 is a deep handy carrier with extra duty handle
- JBSBT1050 includes 4 dividers and can also be divided into small compartments 5" deep
- JBSBT1065 includes 4 dividers and can straddle a 2x4" or 2x6" board. Snap-on lid available for stacking and storage
- JBSBT1075 can fit securely into the grooves of our Dirt Rider. Large size accomodates larger tools and supplies

Organizational & Tote Trays

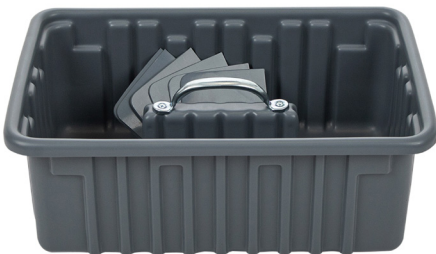
Part Number	Description
JBSBT1000	15" x 9" x 3"
JBSBT1000XD	JBSBT1000 Dividers
JBSBT1025	16 ¾" x 11 ¾" x 4 ½"
JBSBT1050	15" x 9" x 5"
JBSBT1050XD	JBSBT1050 Dividers
JBSBT1075	24" x 12" 6"
JBSBT1075XD	JBSBT1075 Dividers



JBSBT1025



JBSBT1000



JBSBT1050



JBSBT1075

Saddle Trays

Part Number	Description
JBSBT1065	22" x 14" x 8"
JBSBT1065L	JBSBT1065 w/ Lid
JBSBT1065XD	JBSBT1065 Dividers



JBSBT1065





JBSBT1075DR
Dirt Rider

Dirt Rider

Use by itself for tools and parts or snap on the JBSBT1075 Tote Tray

- Glides over dirt on two runners
- Comes with a 6-foot rope
- Easy to clean, simply hose off
- TOUGH! - high molecular weight polyethylene



JBSBT1075DRTT
Dirt Rider/ Tote Tray Combo



JBSBT1040
Chemical Tray

Dirt Rider and Chemical Trays

Part Number	Description
JBSBT1075DR	29" x 14" x 3 ½"
JBSBT1075DRTT	JBSBT1075DR/ JBSBT1075 combo
JBSBT1040	13" x 20 ½" x 2 ¾"

Nipple Caddies

- Made of high density polyethylene
- Withstands harsh chemicals, acids, and oil
- Resistant to rust and corrosion
- Will spring back into shape when bent or crushed
- Can withstand cold weather down to -40°F
- Drain holes in bottom let caddy drain out
- Half the weight of metal, yet sturdy
- Bottom design holds nipples up and keeps them out of water and other liquids
- Made in USA



JBSBT1010



JBSBT1020



JBSBT1005

Part Number	Nipple Size	Outer Dimensions
JBSBT1010	1"	15 1/4" x 8 1/4" x 8 3/4"
JBSBT1015	1 1/2"	21 1/4" x 7 1/4" x 9 3/4"
JBSBT1020	2"	23 1/2" x 8 3/4" x 10 1/2"
JBSBT1005	1/2"	11 1/4" x 7 3/4" x 8 3/4"
JBSBT1007	3/4"	13 3/4" x 8" x 8 3/4"
JBSBT1057	1/2" & 3/4" combo	18 1/2" x 8 1/4" x 8 3/4"



JBSBT1007

Utility Tub Boxes

- All around utility tub boxes in two sizes for all recess and cementing needs
- Made of durable styrene plastic



JBSB1410



JBSB1313

Styrene Utility Tub Boxes

Part Number	Description	Dimensions
JBSB1410	in-cavity pipe setting/ cementing/ utility	12" x 8" x 6" Deep
JBSB1313	in-cavity pipe setting/ cementing/ utility	13" x 13" x 7" Deep
JBSBT2160	large utility tub/ mix- a-crete	26" x 20" x 7" Deep

Universal Tub/ Mix-a-Crete

- Super tough non-stick general use tub
- Mix concrete and rinse out
- General storage and carrying
- Thick HDPE plastic



JBSBT2160

Tub Protectors

- Standard and custom sizes available
- Made of heavy gauge high impact plastic (HIPS/ Styrene)
- Soft foam bottom grips tub surface to protect finish from abrasive action
- No setup or assembly time required
- Nest together for space saving storage
- Fits both left and right hand drain tubs
- Made in USA

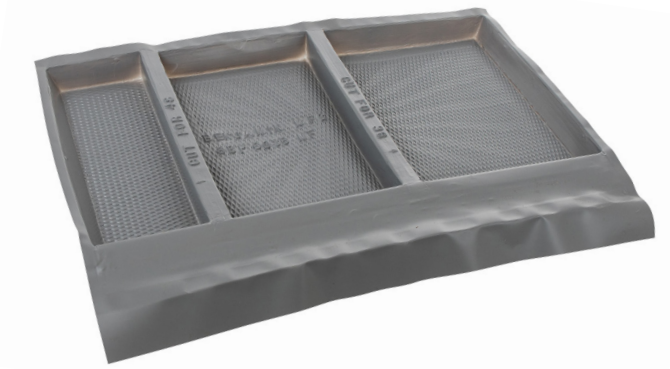


Poly Tub Protector

- Made of heavy gauge flexible poly plastic - durable, foldable, and reusable
- Translucent material for aesthetics

Name	Part Number	Size
Tub Protectors w/ Foam Bottom	JBSBTP603014	60" x 30" x 14"
	JBSBTP603016	60" x 30" x 16"
	JBSBTP604216	60" x 42" x 16"
	JBSBTP604220	60" x 42" x 20"
	JBSBTP724220	72" x 42" x 20"
Tub Protectors No Foam Bottom	JBSBTP603014NF	60" x 30" x 14"
	JBSBTP603016NF	60" x 30" x 16"
	JBSBTP6034216NF	60" x 42" x 16"

Shower Base Protectors



Multi-Fit Shower Base Protector

Multi-Fit Shower Base Protector

- Made of high impact plastic with foam pad bottom
- Foam pad grips shower base to protect finish from abrasive action
- Nest together for space saving storage
- Fits left hand, right hand, or center drain pans
- Made in USA

Multi-Fit Shower Base Protector fits 9 sizes of shower bases

- Can be used right out of the box for 60" x 32", 60" x 34", or 60" x 36" bases
- Small left end can be cut for use in 48" x 32", 48" x 34", 48" x 36" bases
- Large right end can be cut for use in 36" x 32", 36" x 34", or 36" x 36" bases

Single-Fit Shower Base Protector

Single-Fit Shower Base Protector

- Several sizes available
- Sloping floor and level floor/traditional basin alternatives
- Right, left, and center drain alternatives



Name	Part Number	Size
Multi-Fit Shower Base Protector	JBSBSBP6036MF	58" x 35" x 3"
Shower Base Protector Level Floor	Call for more info	40" x 56 3/4" 39 1/2" x 60" 34" x 70" 36" x 39 1/2" 39 1/2" x 48" 25" x 47 1/4"
Shower Base Protector Sloped Floor	Call for more info	60" x 36" 48" x 36"

Washer Machine Pans

- Made of heavy gauge high impact plastic
- Resistant to rust and corrosion
- Available with or without a drain hole in the side
- Includes a 1" drain adapter fitting
- Can be drilled in the field to allow custom placement of drain
- Made in USA
- Outer Dimensions (outside top of pan): 32 1/2" x 30 3/4" x 2 1/4"
- Inner Dimensions (inside bottom of pan): 30" x 28" x 1 3/4"



Part Number	Description
JBSBWMSP1U	29" x 27" ID Undrilled
JBSBWMSP1D	29" x 27" ID Drilled



Water Heater Pans

- Protects against water damage caused by leaking water heaters
- Easy installation - Simply set water heater into pan when installing
- Available with or without drain hole in the side
- Includes 1" drain adapter fitting
- Undrilled pans can have holes drilled in field to allow custom placement for drain
- Resistant to rust and corrosion
- Round design allows installation in small areas
- Available in six nominal sizes: 20", 22", 24", 26", 28", 30"
- Made in USA



Water Heater Pan DRILLED

Size	Part Number	Description
20"	JBSBWHP201D	19 1/2" ID/ 21" OD
22"	JBSBWHP221D	22 1/2" ID/ 24 1/2" OD
24"	JBSBWHP241D	23 1/2" ID/ 25 1/4" OD
26"	JBSBWHP261D	26" ID/ 28" OD
28"	JBSBWHP281D	27 1/2" ID/ 29" OD
30"	JBSBWHP301D	30" ID/ 31 1/2" OD



1" Drain Adapter Included



Water Heater Pan UNDRILLED

Size	Part Number	Description
19"	JBSBWHP191U	19" ID
20"	JBSBWHP201U	19 ½" ID/ 21" OD
22"	JBSBWHP221U	22 ½" ID/ 24 ½" OD
24"	JBSBWHP241U	23 ½" ID/ 25 ¼" OD
26"	JBSBWHP261U	26" ID/ 28" OD
28"	JBSBWHP281U	27 ½" ID/ 29" OD
30"	JBSBWHP301U	30" ID/ 31 ½" OD



Adapter For Drain Hose

Part Number	Description
JBSBSPF100	1" Adapter

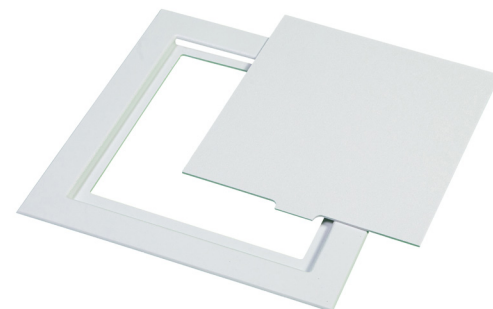


1" Adapter
Included



Access Panels & Covers

- Provides access to pumps on whirlpools, spas, tub/shower valve bodies, hidden shut-off or regulating valves, trap primers, clean-outs, etc.
- Nothing to wear out - white finish, no snaps, beveled edge, no screws
- Textured finish, no hinges, can be painted, no springs
- High impact plastic



Access Panel

Access Panels

Part Number	Size (ID)	Size (OD)
JBSBAP55	4 3/4" x 4 3/4"	7 1/2" x 8"
JBSBAP88	8" x 7.875"	11 3/4" x 11 3/4"
JBSBAP96	9.125" x 6.125"	12.375" x 9 1/2"
JBSBAP1212	11.375" x 11 1/4"	14 3/4" x 14.625"
JBSBAP1414	13.35" x 13 1/4"	16 3/4" x 16.625"
JBSBAP1426	13" x 25.625"	16 3/4" x 29 1/2"

Access Covers

- Inexpensive solution to cover an access
- Pre-drilled holes in corners
- Textured finish for easy painting
- High impact plastic material

Access Covers

Part Number	Description
JBSBACF1212	12" x 12"
JBSBACF1717	17" x 17"



Access Cover

- Protects against water damage caused by leaking air handling units
- Simple install - set underneath units
- Available with or without drain hole in the side
- Includes 1" drain adapter fitting
- Undrilled pans can have holes drilled in field to allow custom placement for drain
- Resistant to rust and corrosion
- Lip cut out accommodates water alarm unit
- Available in two sizes: 31" x 26" ID and 37 1/2" x 14 1/2" ID
- 2 1/2" Deep
- Made in USA

Part Number	Description
JBSBCDP3026	31" x 26" ID
JBSBCDP3714	37 1/2" x 14 1/2" ID



Foam Spacer

- 4" high spacer wrap in either an 82-foot roll or 4" x 50" single use size
- Easy install
- Protects pipe from concrete
- Replaces styrofoam, coffee can, and duct tape
- Saves labor - eliminates need to chip out concrete



JBSBFS82



Part Number	Description
JBSBFS44	4" x 44"
JBSBFS82	4" x 82'
JBSBHCW24	.125" x 2" x 40'

Handi Wrap Multi-Purpose Foam Tape

Handi Wrap Multi-Purpose Foam Tape

- Closed polyethylene foam specifically designed for wrapping
- Traps and supplies in a public restroom, pipe wrap, etc.
- Pressure sensitive adhesive backing
- Full 2" adhesive coverage (will not curl)
- Quick & easy install
- Multi-use/ Insulation
- White color for neutral appearance
- Meets ADA requirements
- .125" thick x 2" wide x 40' long roll
- Made in USA



6851 Enterprise Drive
South Bend, IN 46628
574.288.0607