

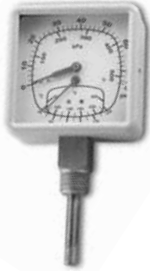


1354W-1

Needle Valve

All brass construction. 2,000 psi rated @ 300° F. Double female ends.

Item No.	Description	List	Qty
1354W-1	Brass Needle Valve 1/4" fip	17.16	1



1353A

Tridicators

Temperature and pressure gauges for boilers. All brass probe and mounting hardware.

Item No.	Description	List	Qty
1353A	Straight 3" Dial 60 psi, 60 to 260° 1/2" mip	59.69	1
1353C	Straight 3" Dial 200 psi, 60 to 260° 1/2" mip	59.69	1

1353B	Angle 3" Dial 60 psi, 60 to 260° 1/2" mip	53.69	1
1353D	Angle 3" Dial 200 psi, 60 to 260° 1/2" mip	53.69	1
1353E	Angle 2-1/2" Dial, 75 psi, 70 to 320° Stem 1-3/4" long, 1/4" mip	28.49	1



1353D



1353E



1231A



1230A

Thermometers

All have 1/2" mip wells. Available with brass or steel wells. Measures temperatures from 40° F up to 280° F.

Item No.	Description	List	Qty
1230A	Steel Shank Straight Thermometer	29.87	1
1231A	Steel Shank Angle Thermometer	35.18	1

1230B	Brass Shank Straight Thermometer	30.56	1
1231B	Brass Shank Angle Thermometer	34.64	1

Pocket Test Thermometers

5" stainless steel probe. Includes sheath with pocket clip to protect thermometer. Ranges, cold -40° to 160°, hot 0 to 220°.



1230H

Item No.	Description	List	Qty
1230H	Hot range 0° up to 220° F	13.09	1
1230C	Cold range -40° up to 160° F	13.09	1



1906

Schrader Air Valve

Item No.	Description	List	Qty
1906	Schrader Air Valve 1/4" mip	3.13	25